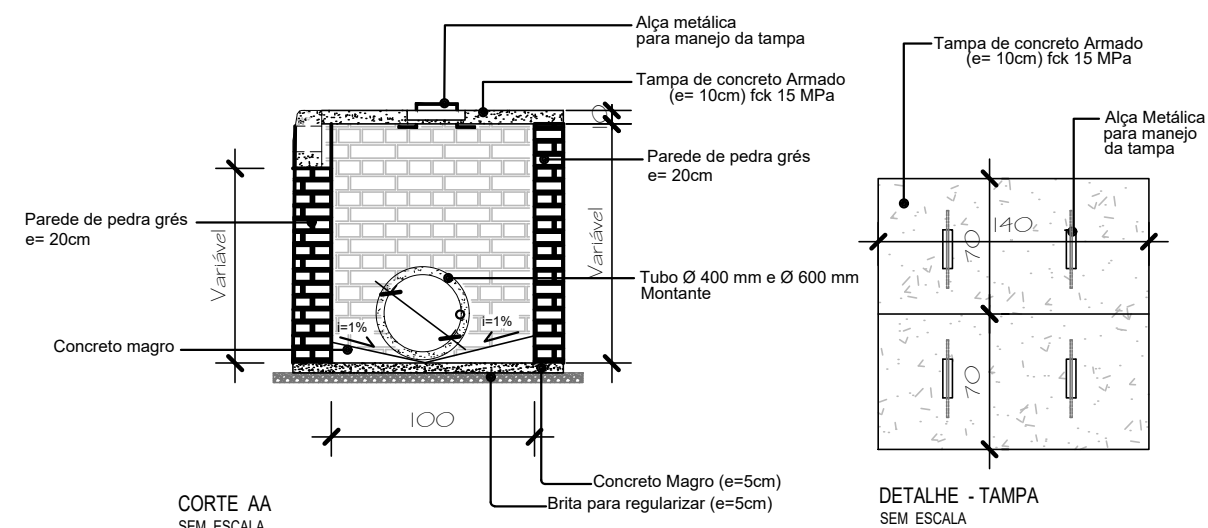
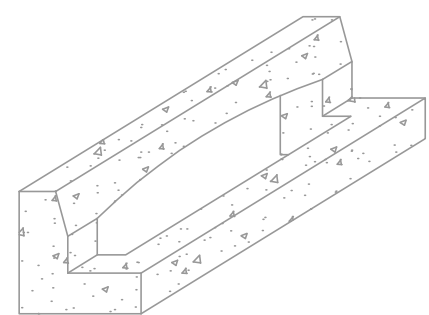
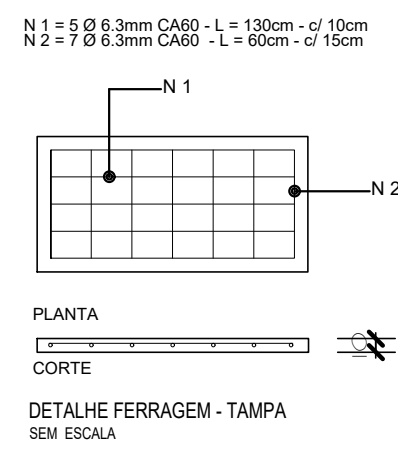
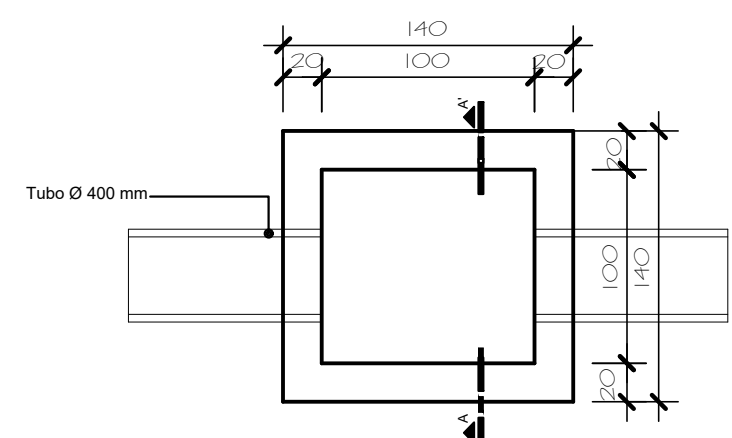


DETALHE CAIXA DE INSPEÇÃO



CORTE AA SEM ESCALA

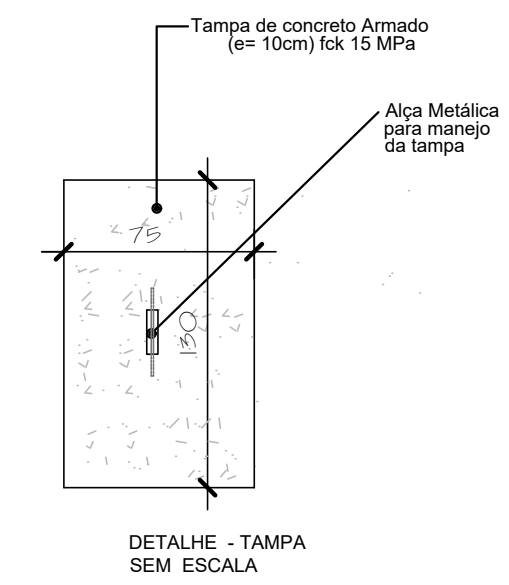
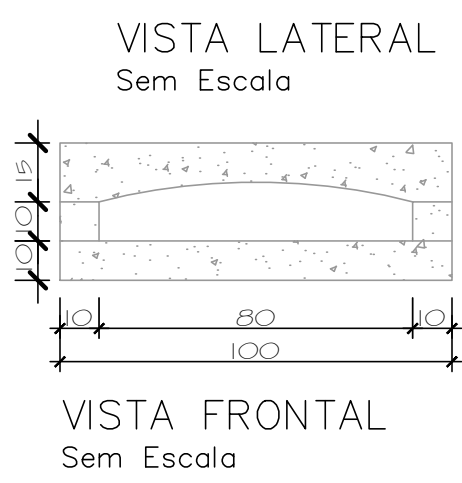
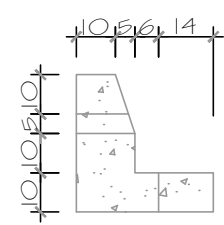
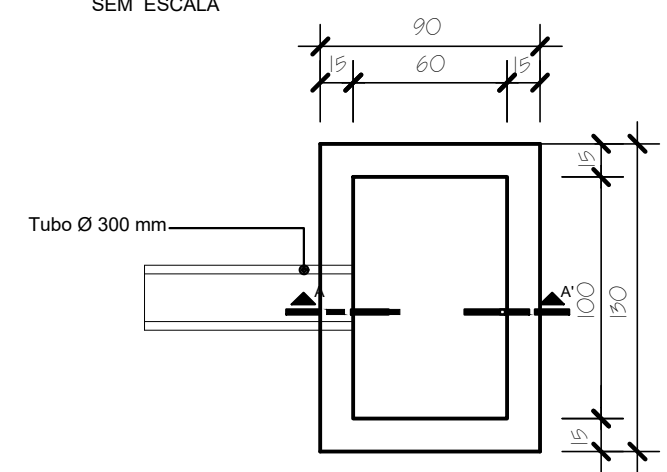
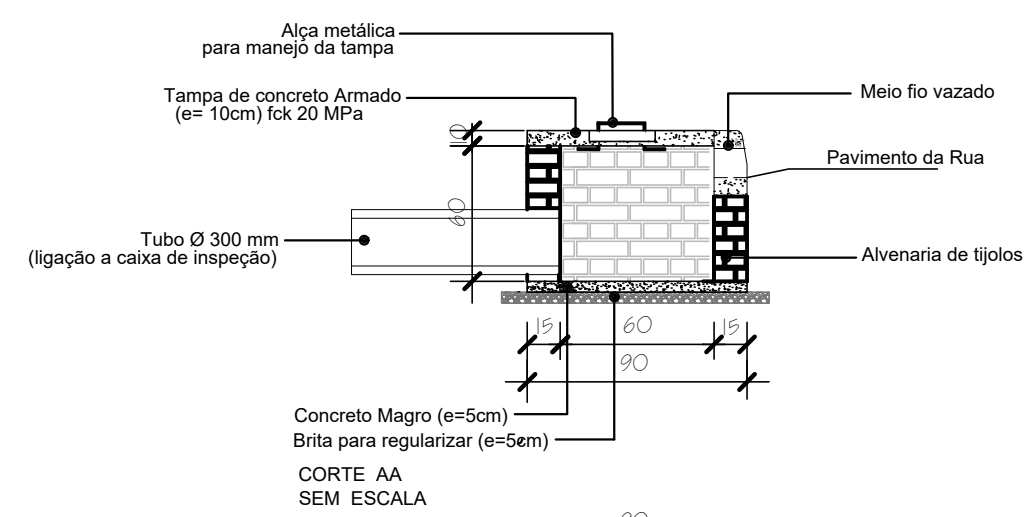
Obs.: A altura total da caixa poderá variar conforme as características do terreno no local de sua execução.



PERSPECTIVA Sem Escala

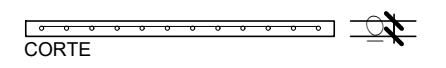
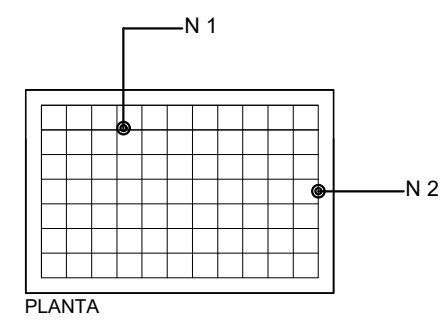
DETALHE - ESPELHO DE CONCRETO SEM ESCALA BOCA DE LOBO

DETALHE BOCA DE LOBO



N 1 = 6 Ø 6.3mm CA60 - L = 140cm - c/ 10cm

N 2 = 12 Ø 6.3mm CA60 - L = 70cm - c/ 10cm



DETALHE FERRAGEM - TAMPA SEM ESCALA

 ADM.: Constantino Orsolin Gilberto da Conceição Cezar	PROJETO DE PAVIMENTAÇÃO Rua Egon Arnold e dos Ciprestes		
	Detalhes		
PREFEITURA MUNICIPAL DE CANELA	Proprietário	Município de Canela	
	Projeto	Enq. Civ. Vera R. G. Madeira CREA: 97219	
Telefone - 54 282 4077 Rua Dona Carlinda, n. 455	Execução		
Data	Escala	Área	Desenho
Julho/2018	1/1		PATRÍCIA