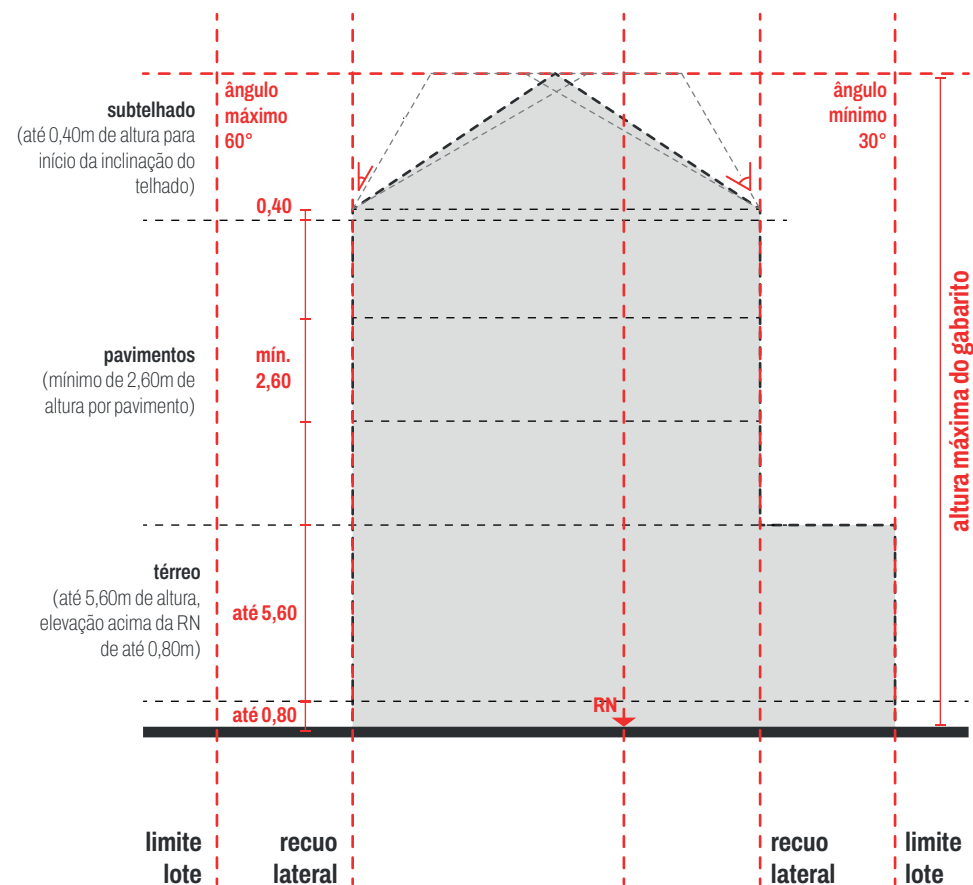
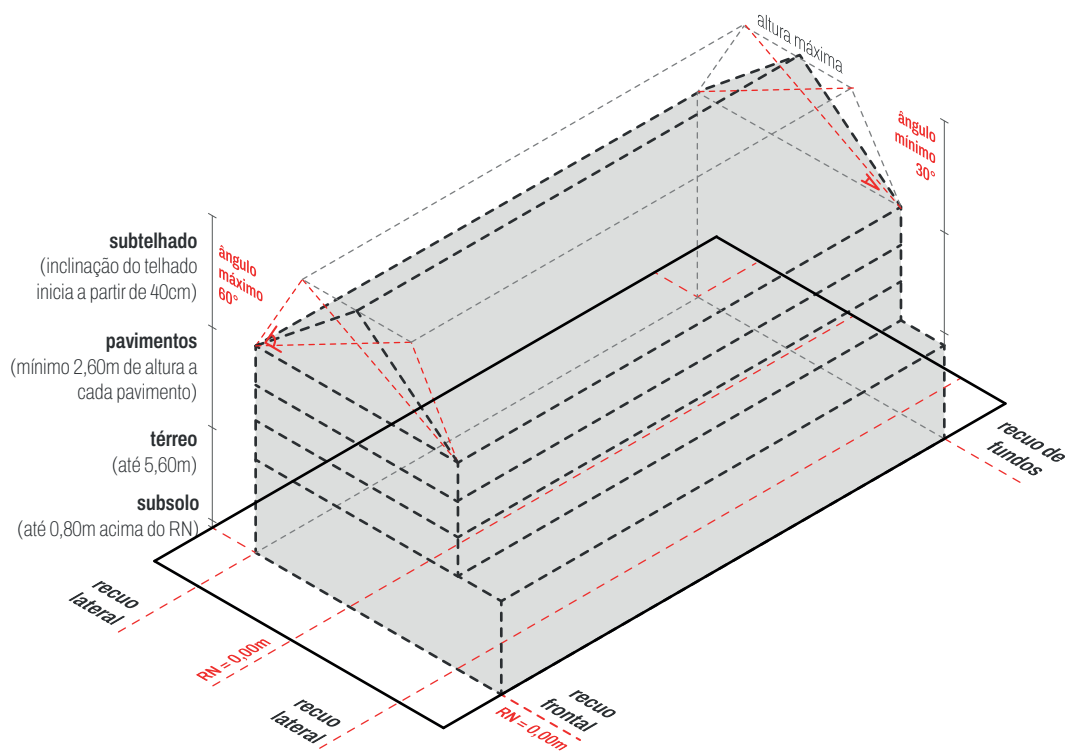


### Gabarito da edificação

Altura, Recuo Lateral, Recuo Frontal e Recuo de Fundos

### Índices de aproveitamento e taxas de ocupação dentro do gabarito volumétrico (alternativas)

Fig. 01. Gabarito da Edificação



**Fig. 02. Gabarito da Edificação**

## Referência de Nível

ponto médio do plano da fachada frontal com o solo

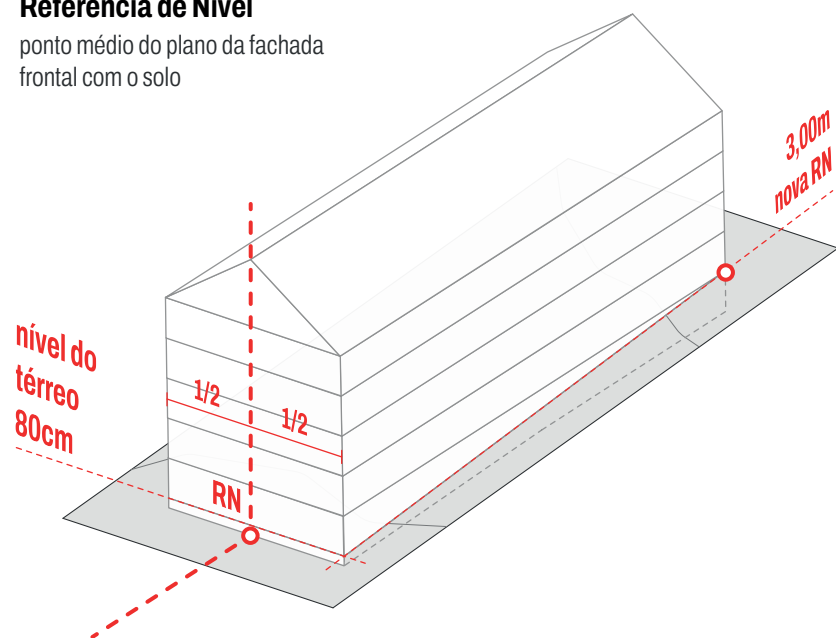


Fig. 03. Referência de Nível

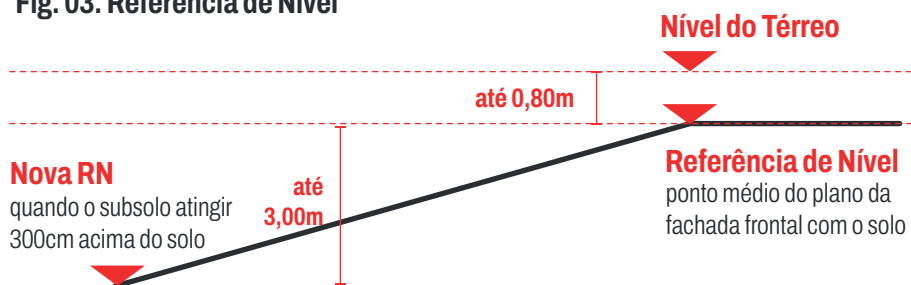


Fig. 04 Referência de Nível

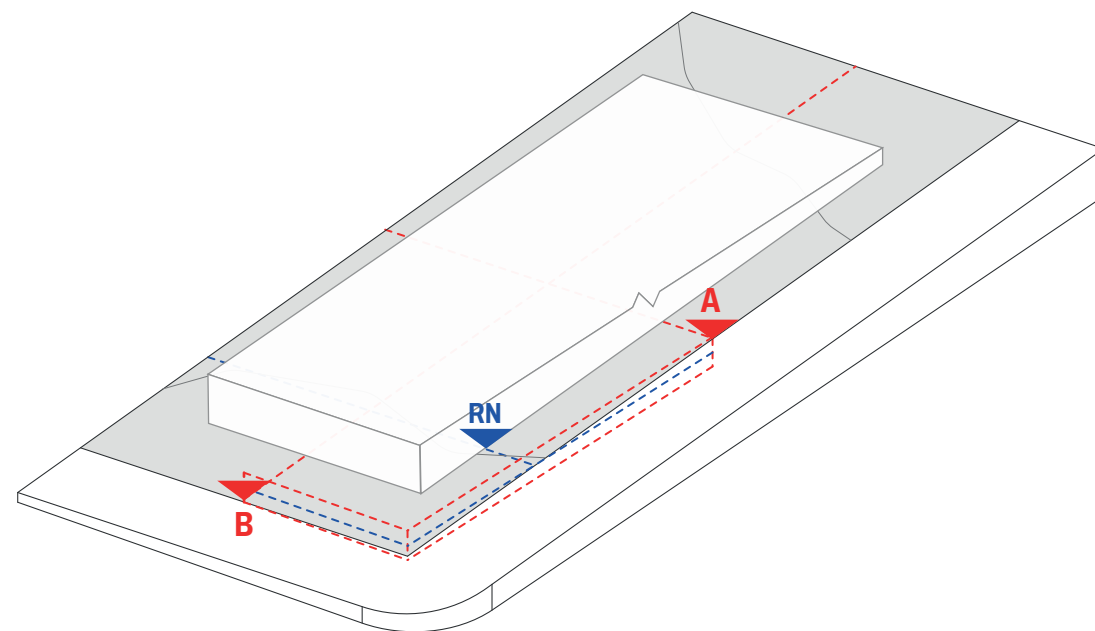
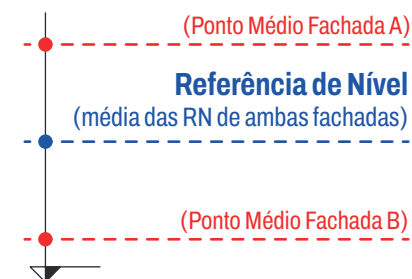


Fig. 05 Referência de Nível



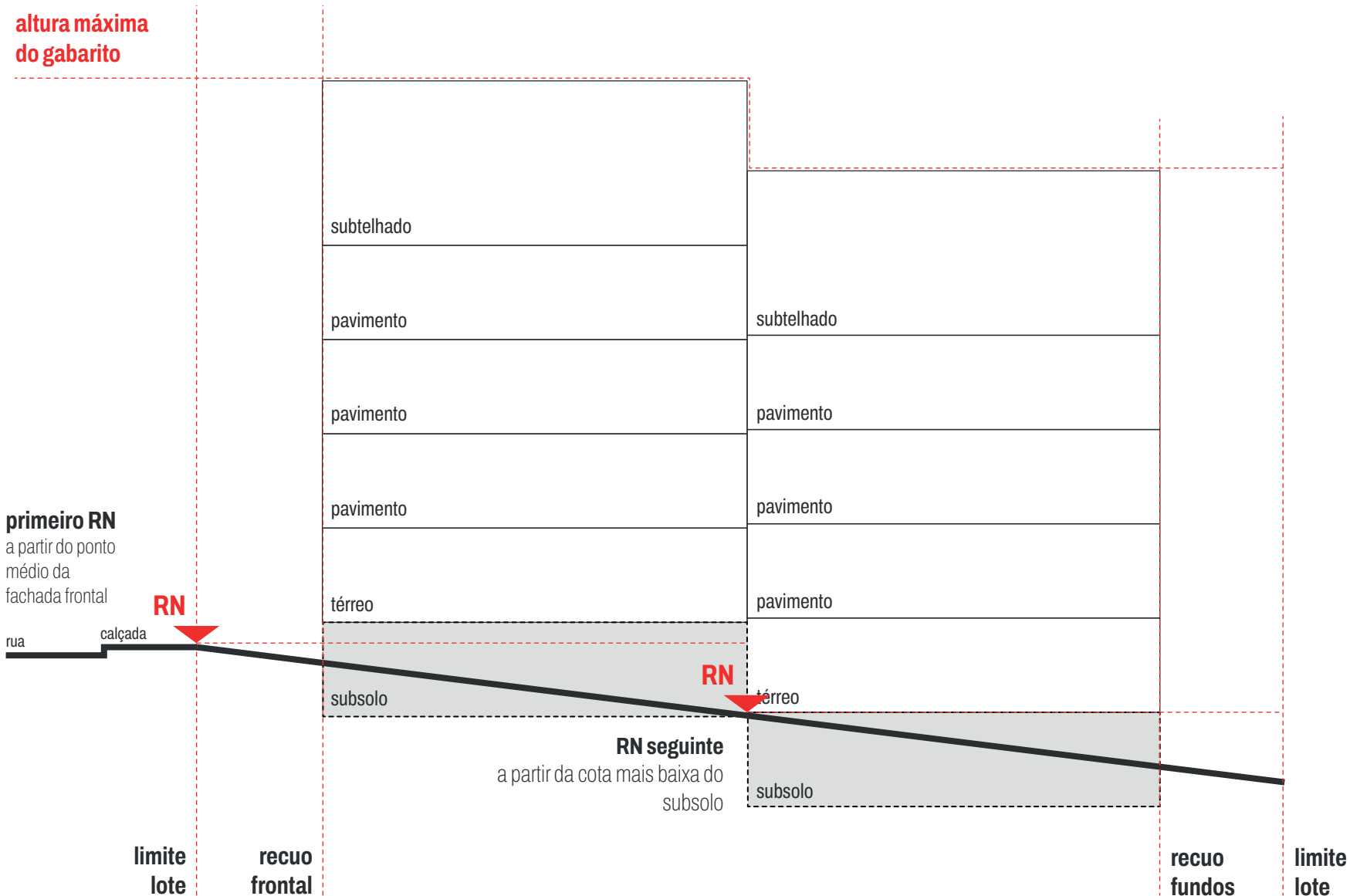


Fig. 06. Referência de Nível

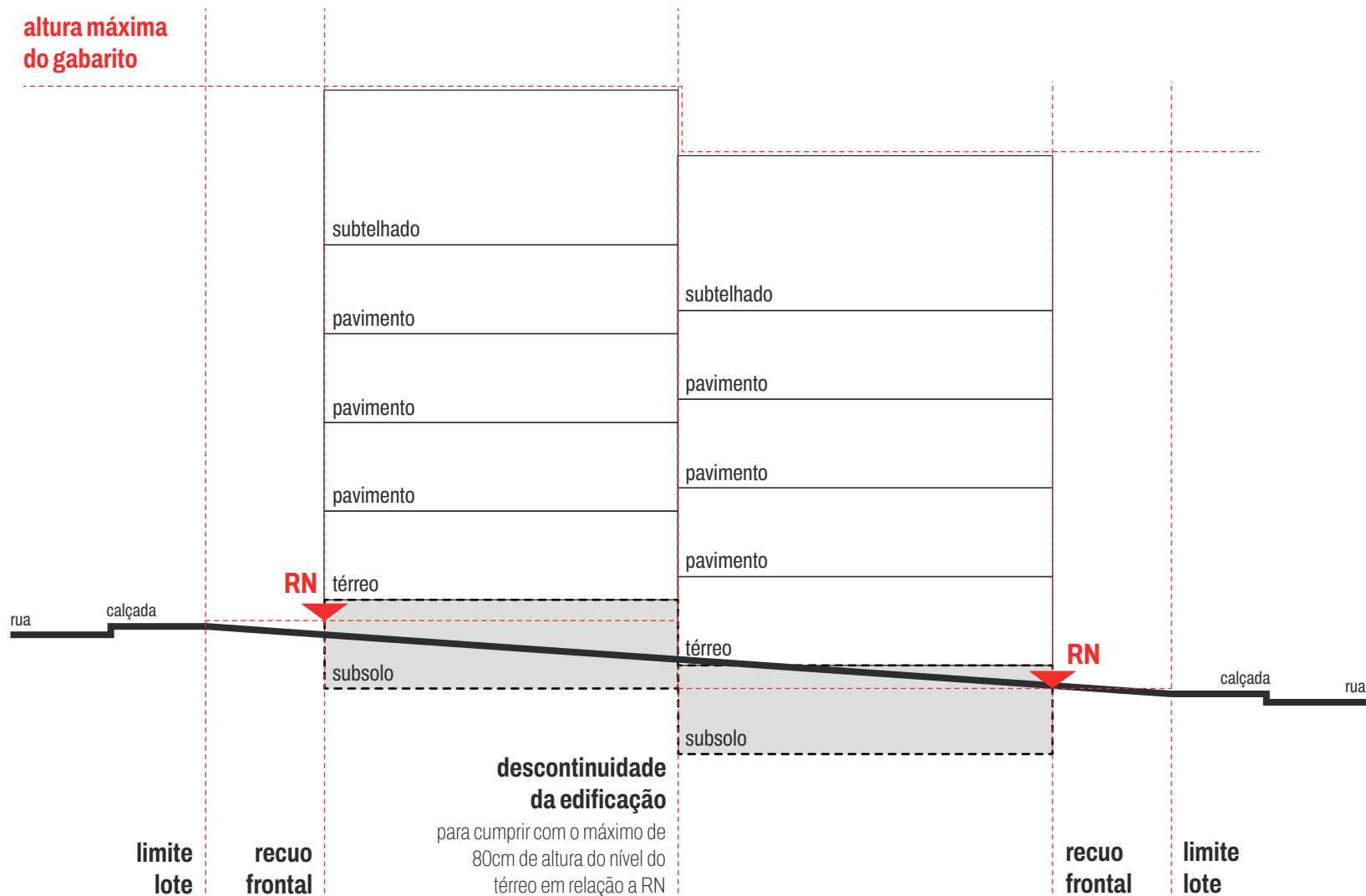
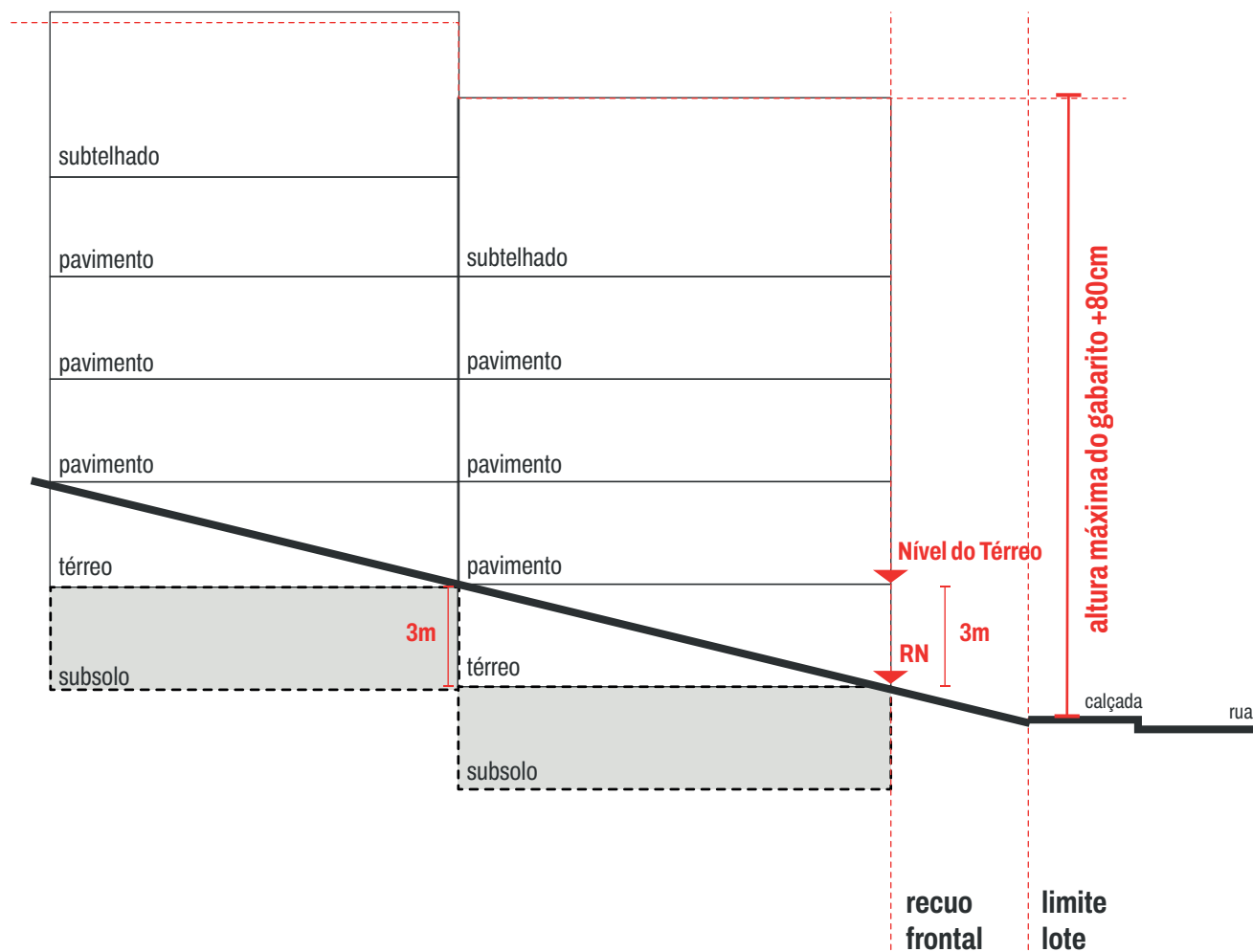
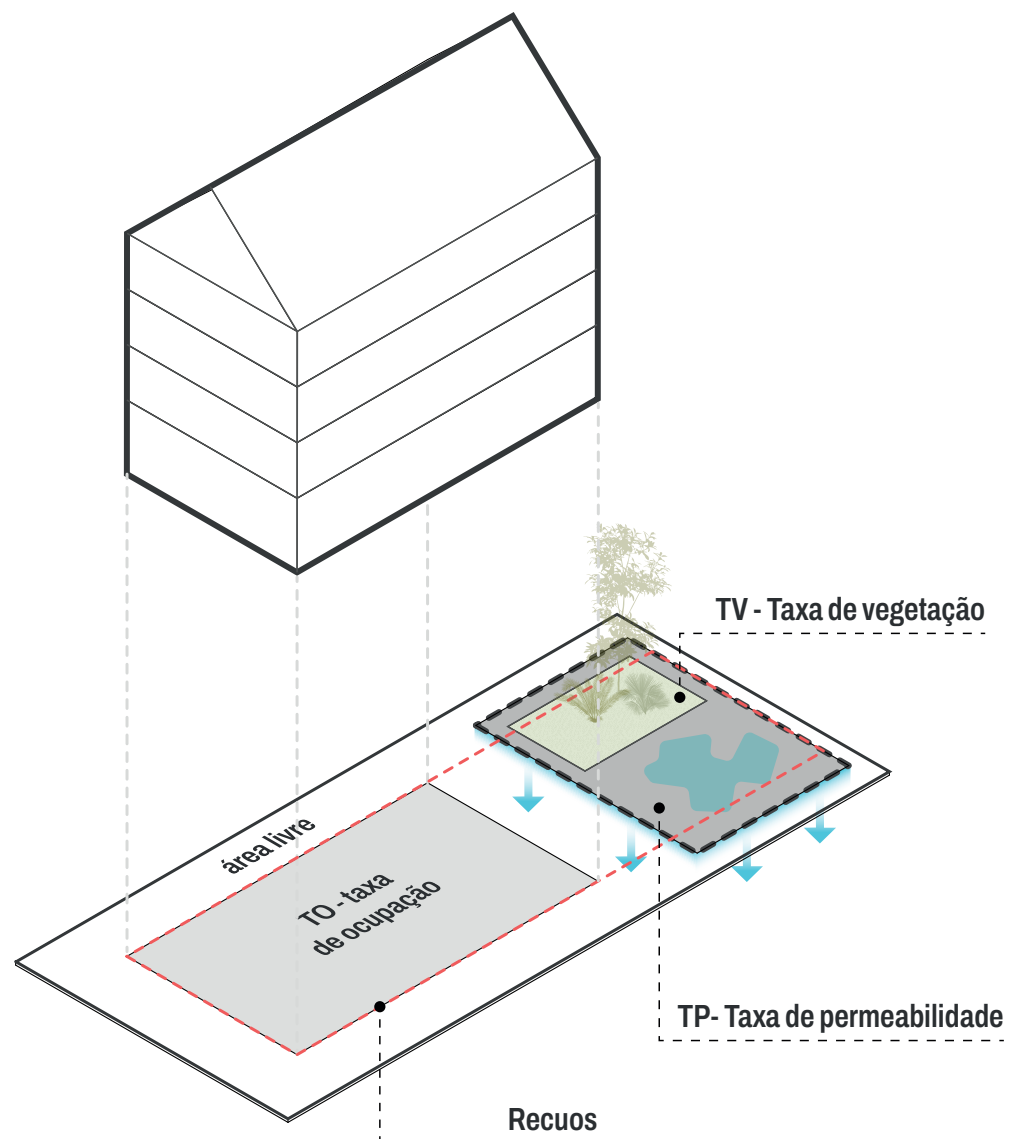


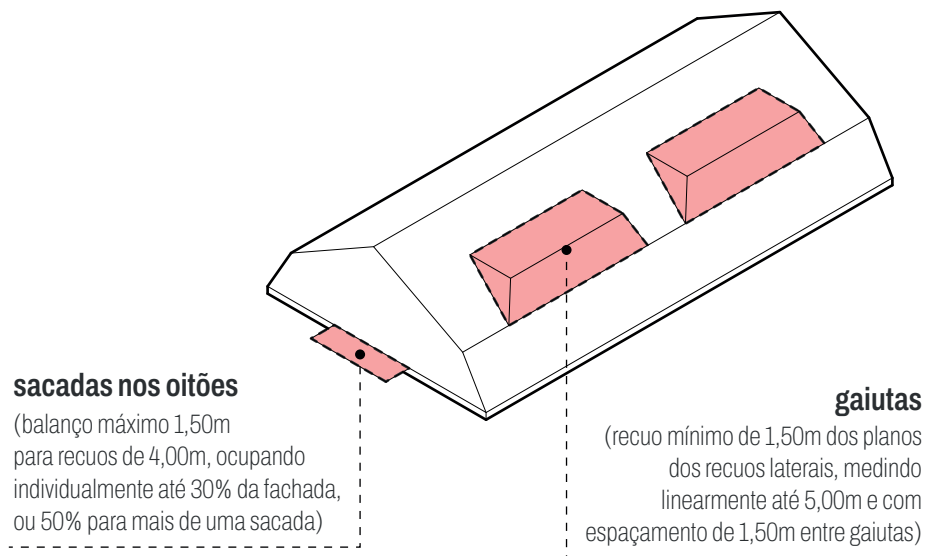
Fig. 07. Referência de Nível



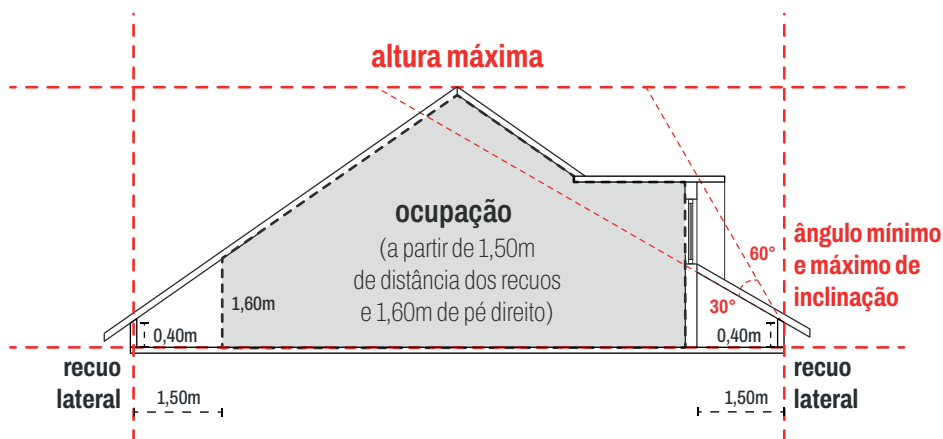
**Fig. 08. Referência de Nível**



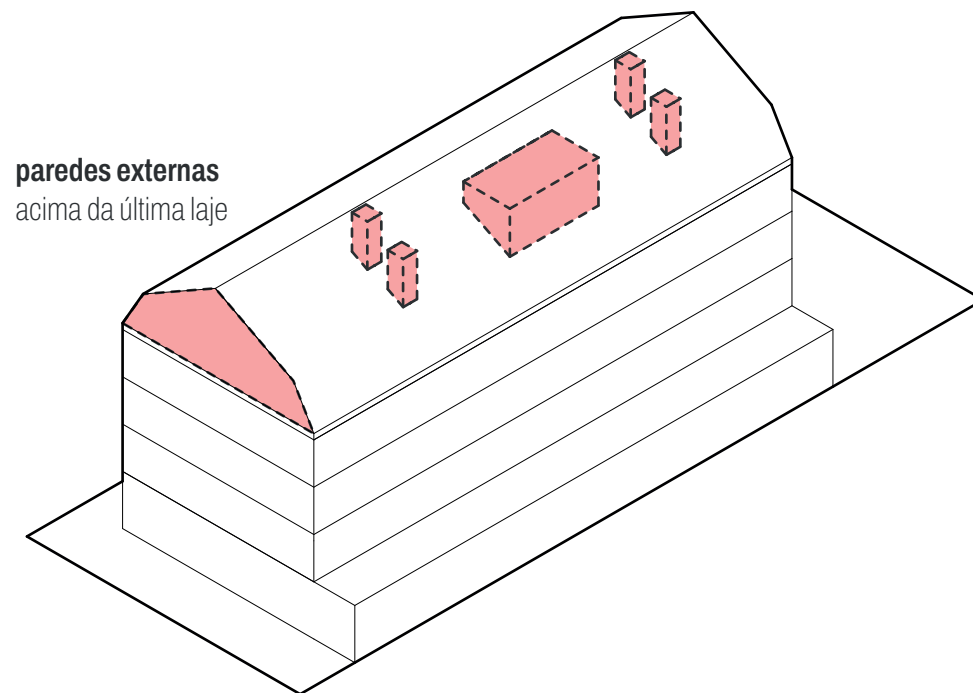
**Fig. 09. Parâmetros gerais**



**Fig. 10. Sacadas e gaiutas**



**Fig. 11. Subtelhado**



**Fig. 12. Paredes externas**



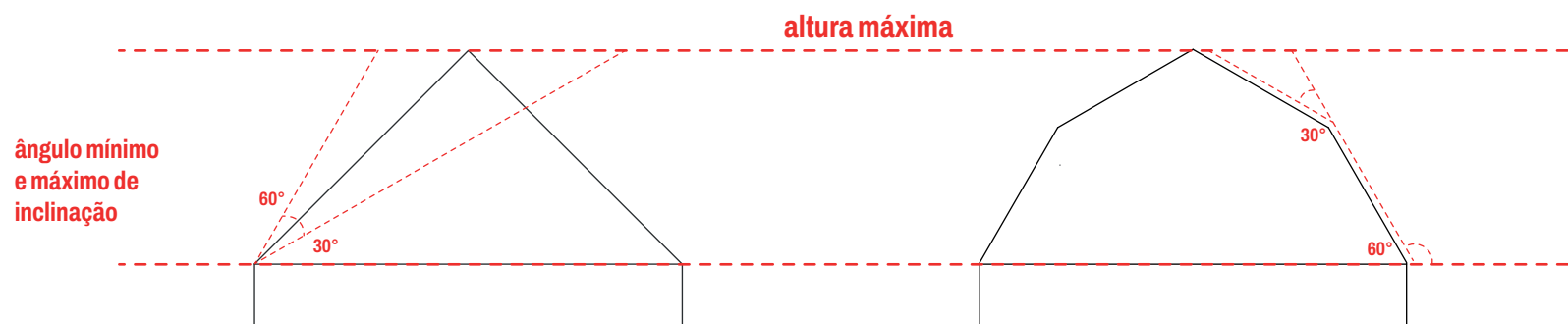
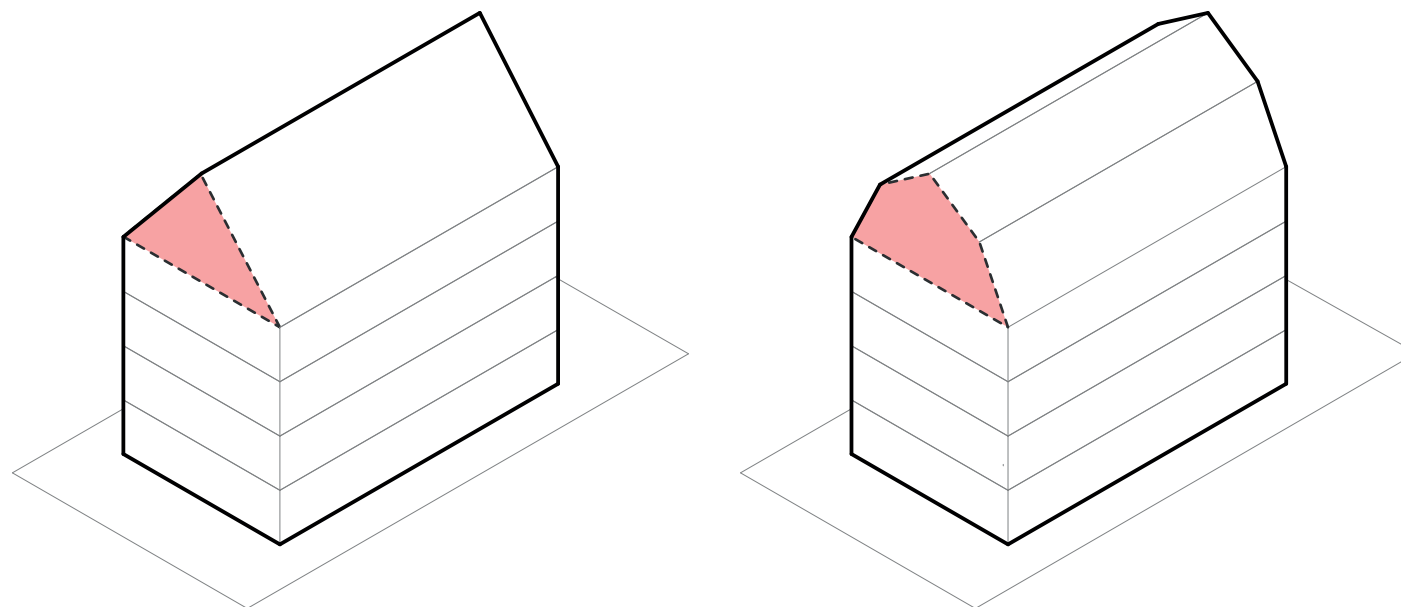
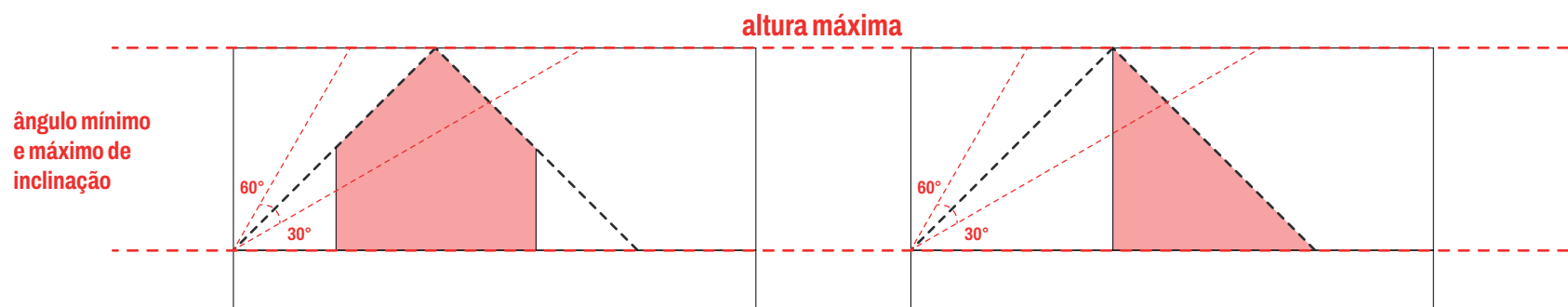
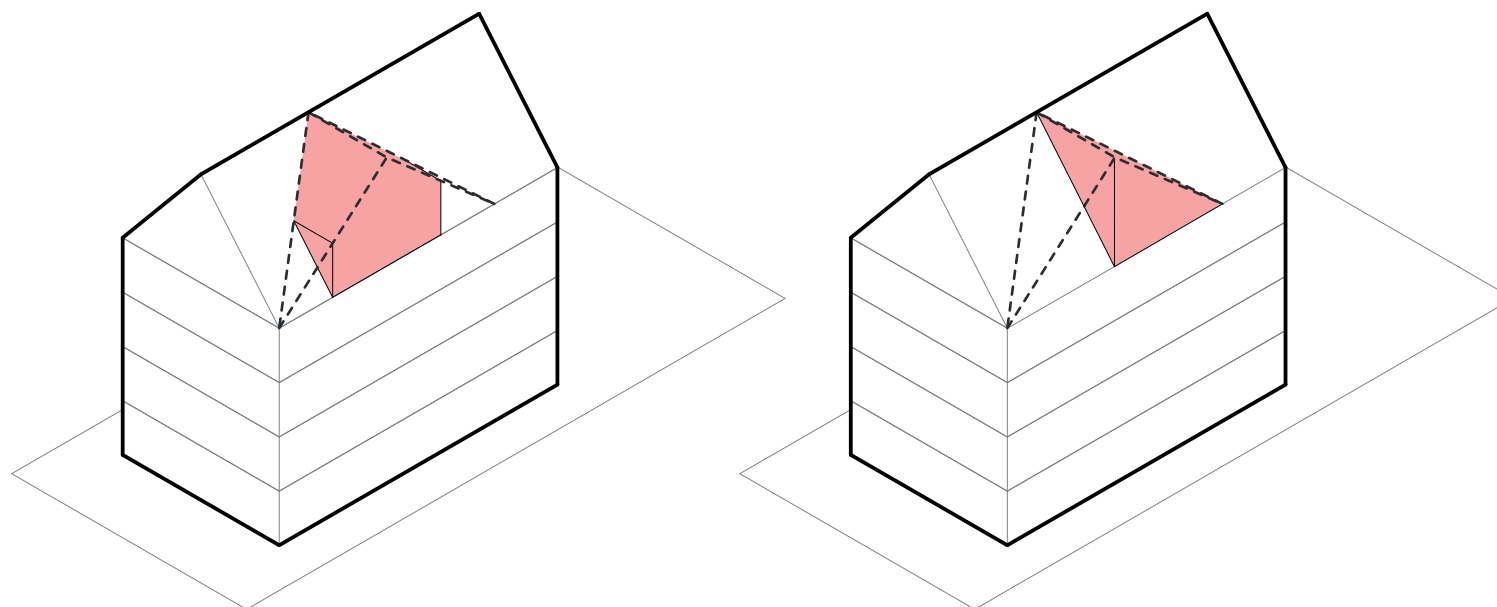


Fig. 13. Oitão principal



**Fig. 14. Oitão parcial**

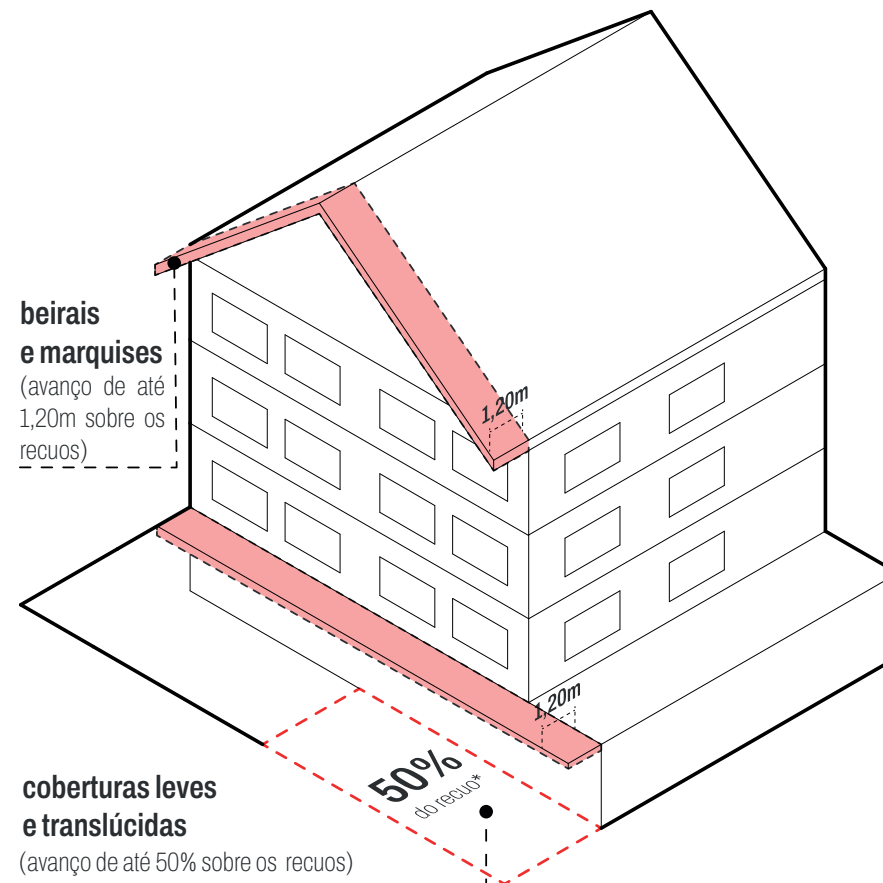
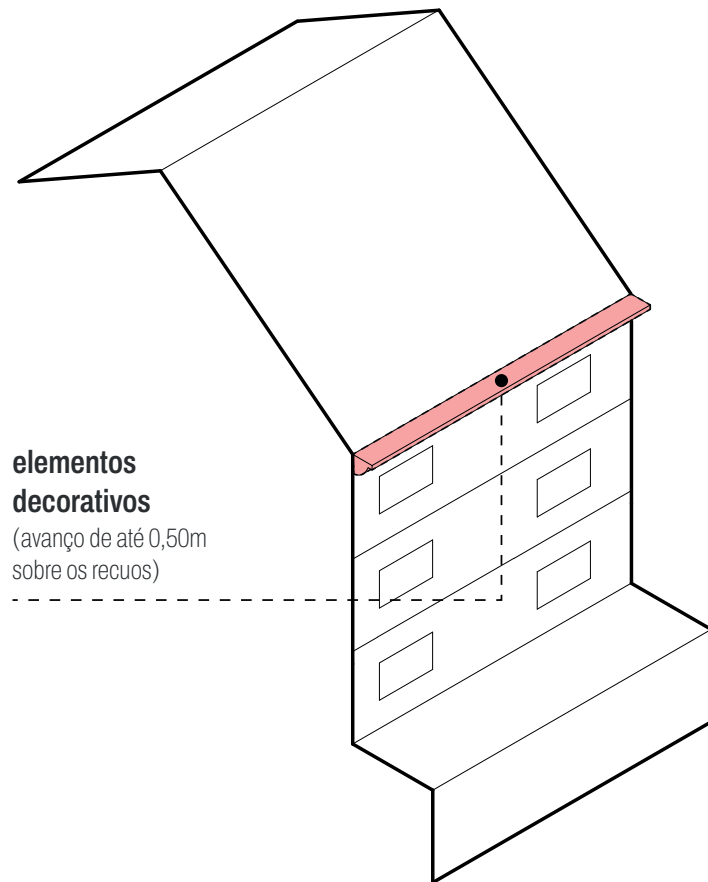


Fig. 15. Elementos que sobressaem a fachada

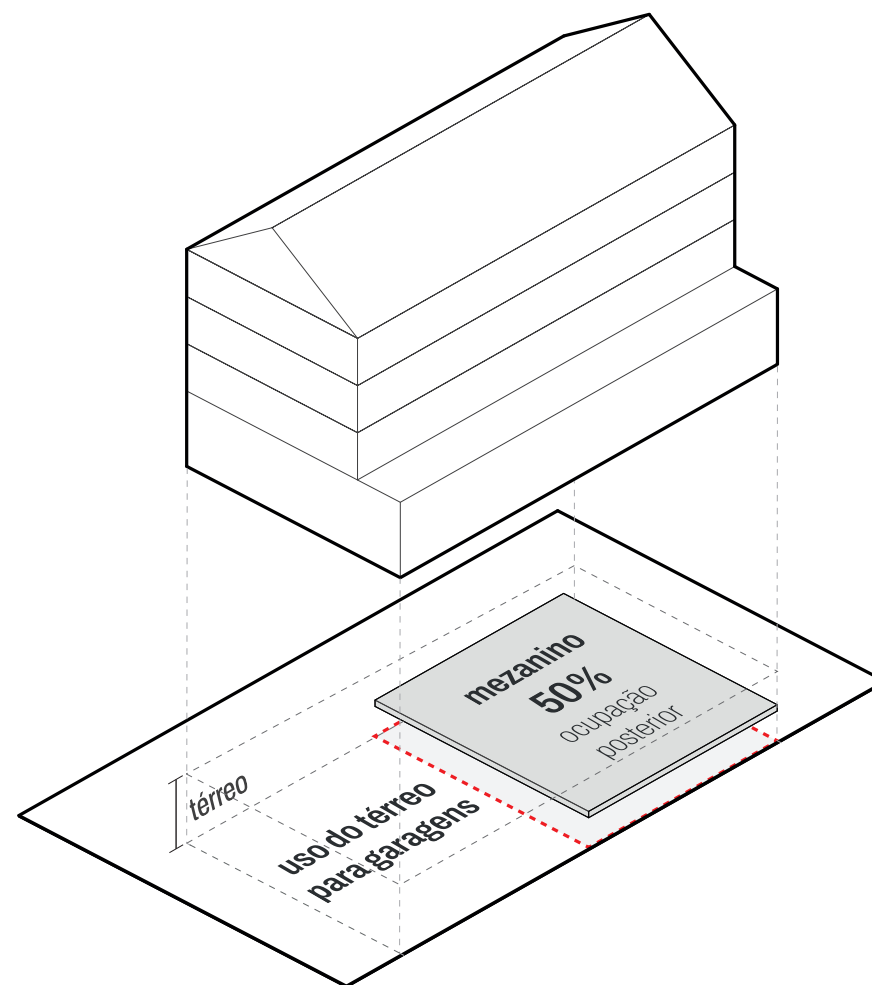
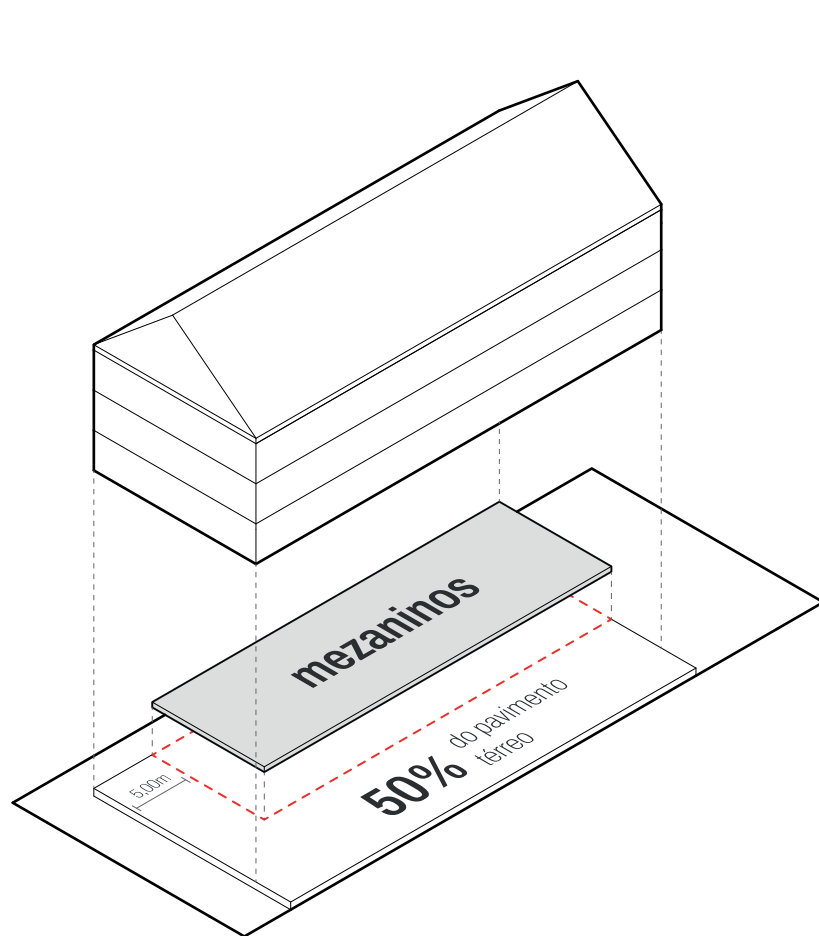


Fig. 16. Mezaninos

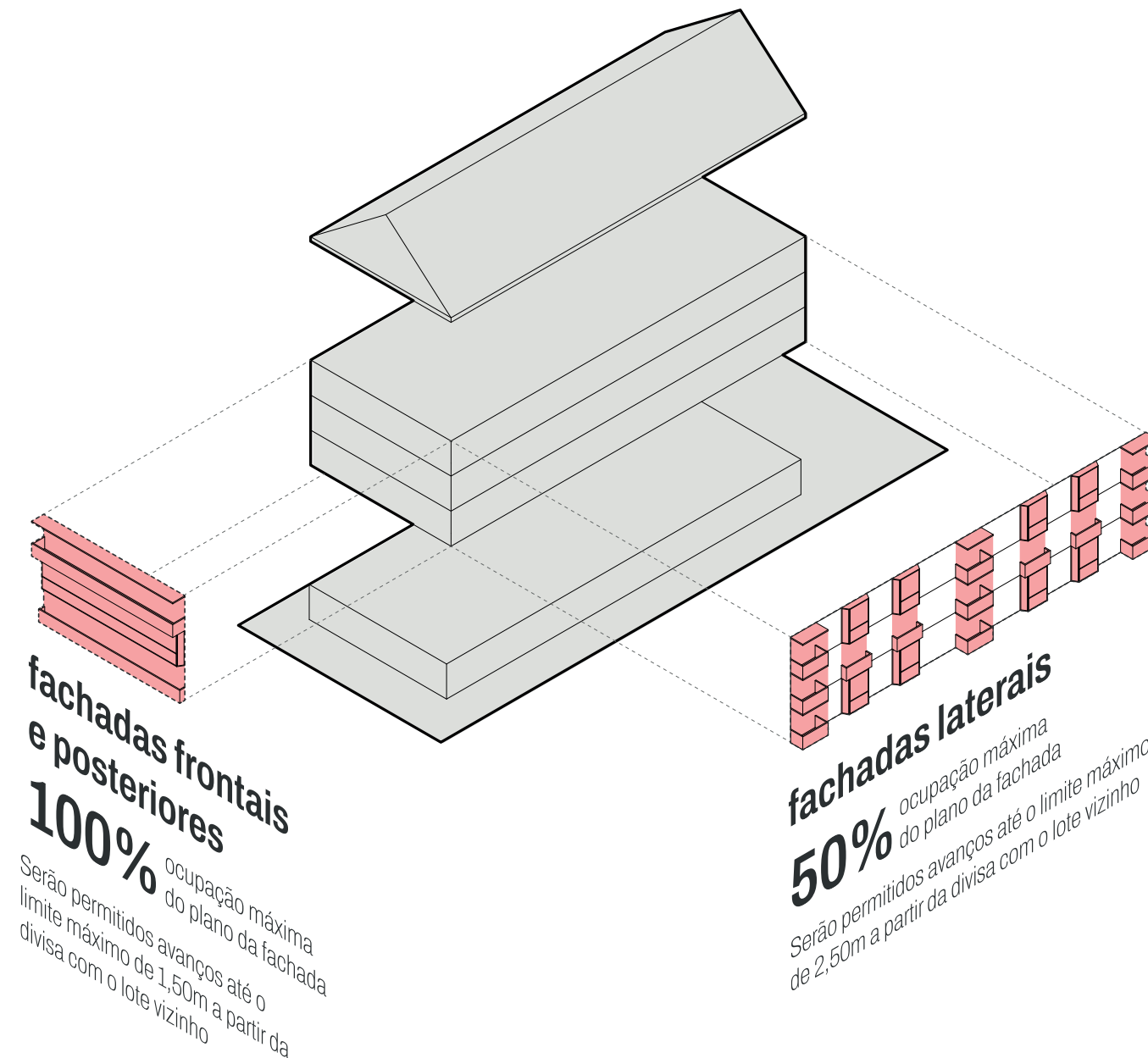
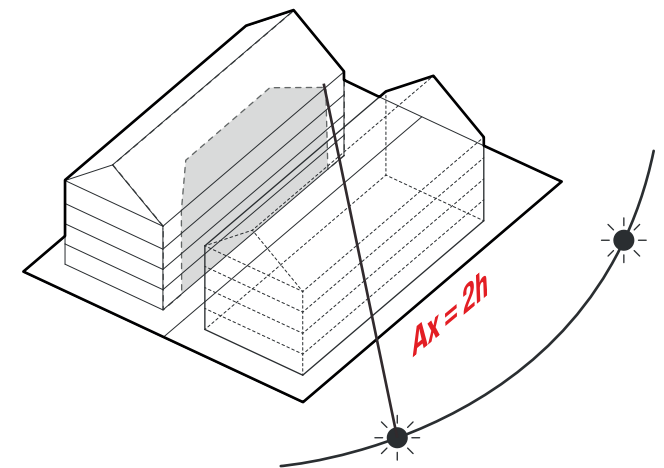
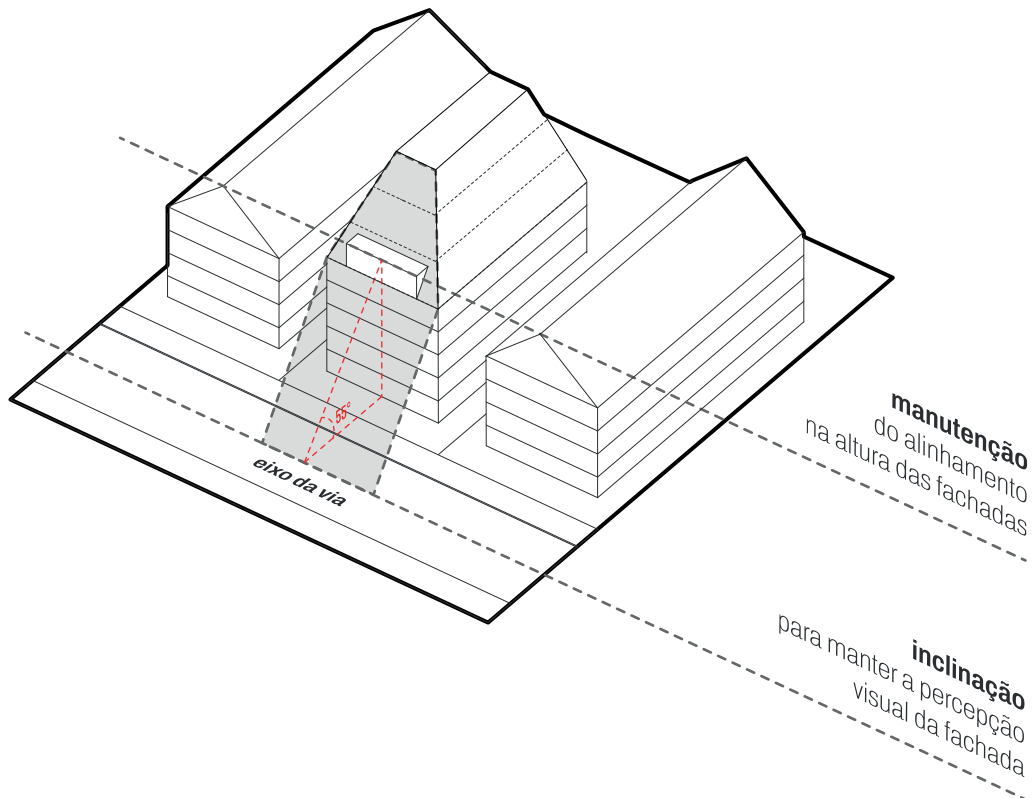


Fig. 15. Ocupação dos planos de fachada



horas de sol  
 $A_y \leq A_x$

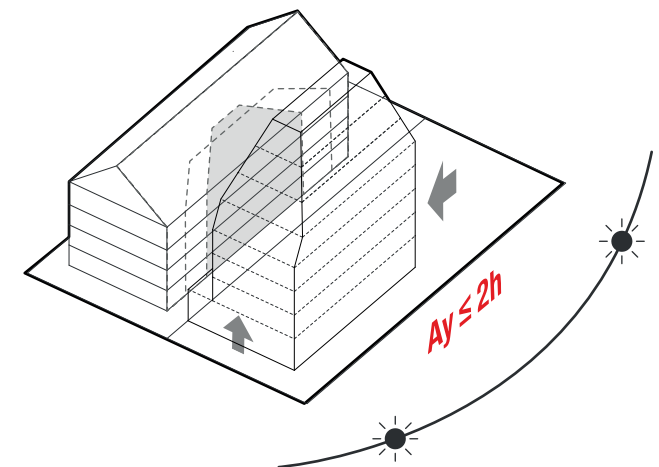


Fig. 18. Adequação volumétrica

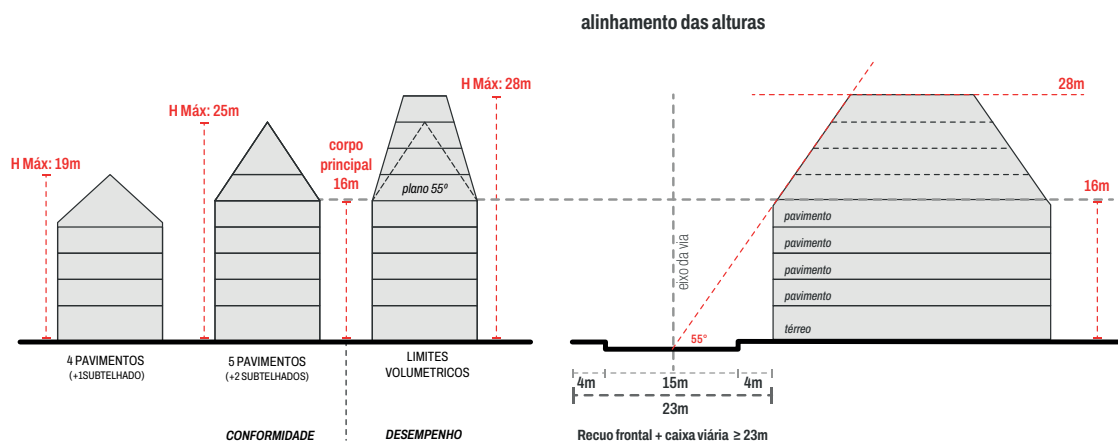


Fig. 17. Adequação volumétrica

Anexo  
1.6

### Características Específicas da Edificação | Adequação Volumétrica

Plano Diretor de Desenvolvimento Urbano e Ambiental de Canela  
Prefeitura Municipal de Canela - RS

Elaboração:  
Núcleo de Tecnologia Urbana (NTU)  
Fundação Luiz Englert, 2025

